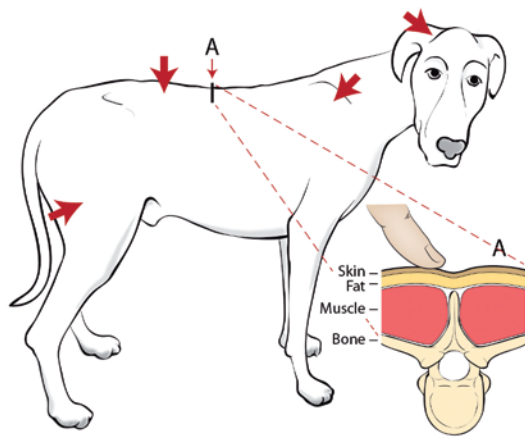




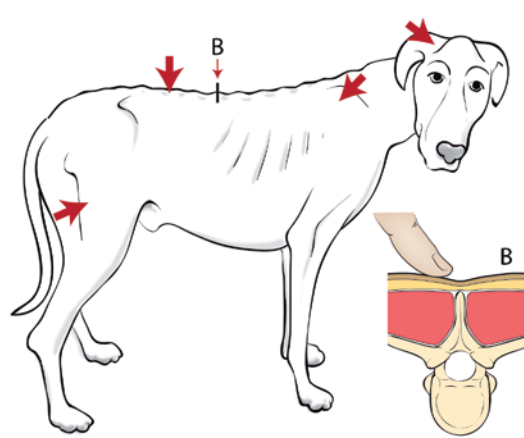
Muscle Condition Score

Muscle condition score is assessed by visualization and palpation of the spine, scapulae, skull, and wings of the ilia. Muscle loss is typically first noted in the epaxial muscles on each side of the spine; muscle loss at other sites can be more variable. Muscle condition score is graded as normal, mild loss, moderate loss, or severe loss. Note that animals can have significant muscle loss if they are overweight (body condition score > 5). Conversely, animals can have a low body condition score (< 4) but have minimal muscle loss. Therefore, assessing both body condition score and muscle condition score on every animal at every visit is important. Palpation is especially important when muscle loss is mild and in animals that are overweight. An example of each score is shown below.

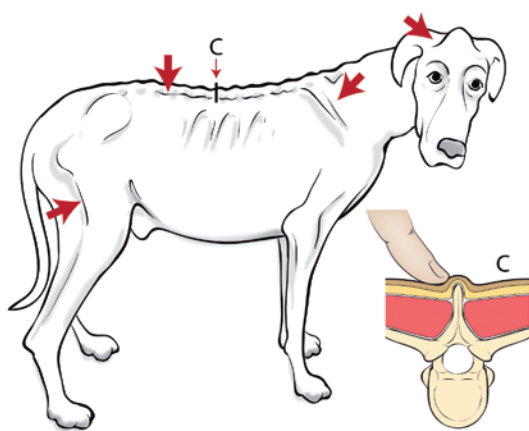
Normal muscle mass



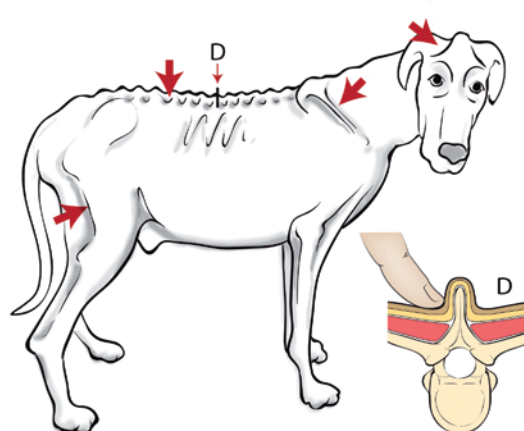
Mild muscle loss



Moderate muscle loss



Severe muscle loss





Muscle Condition Score

Muscle condition score is assessed by visualization and palpation of the spine, scapulae, skull, and wings of the ilia. Muscle loss is typically first noted in the epaxial muscles on each side of the spine; muscle loss at other sites can be more variable. Muscle condition score is graded as normal, mild loss, moderate loss, or severe loss. Note that animals can have significant muscle loss even if they are overweight (body condition score > 5/9). Conversely, animals can have a low body condition score (< 4/9) but have minimal muscle loss. Therefore, assessing both body condition score and muscle condition score on every animal at every visit is important. Palpation is especially important with mild muscle loss and in animals that are overweight. An example of each score is shown below.

Normal muscle mass

Normal muscle mass

Mild muscle loss

Mild muscle loss

Moderate muscle loss

Moderate muscle loss

Severe muscle loss

Severe muscle loss

